



MINUTEMAN PARK, BLDG III - SUBLEASE

13961 SOUTH MINUTEMAN DRIVE | DRAPER | UTAH

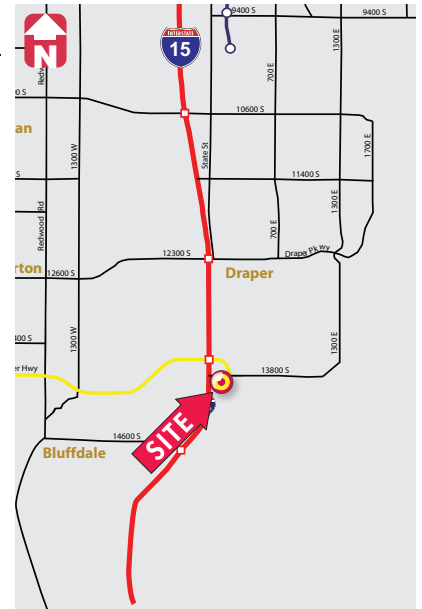
Space Available for Sublease

INDUSTRIAL
OFFICE
RETAIL
INVESTMENT
LAND
PROPERTY
MANAGEMENT



PROPERTY FEATURES

- Approximately 5,234 RSF on the first floor
- New Class "A" office building in Minuteman Office Park
- Sublease Rate is ~~\$22.15~~ **\$16.50** PRSF, Full Service (1st year)
- Sublease expires October 31, 2012
- Parking Ratio is 5 stalls/1,000 RSF Leased
- Brand new build out with a combination of offices and open space
- Great location with immediate access to I-15
- Growing area with numerous restaurants and amenities available



contact

Jack A. Woodward

direct 801.578.5565
jwoodward@naiutah.com

Jake J. Davis

direct 801.746.4722
jdavis@naiutah.com

Nick M. Teseros, MBA

direct 801.746.4749
nteseros@naiutah.com

This statement with the information it contains is given with the understanding that all negotiations relating to the purchase, renting or leasing of the property described above shall be conducted through this office. The above information while not guaranteed has been secured from sources we believe to be reliable.

NAI Utah\2 - South Valley\Jack Woodward\1 - Flyers\Minuteman Park Building III Sublease



Commercial Real Estate Services, Worldwide.

Creating and preserving real estate values.™

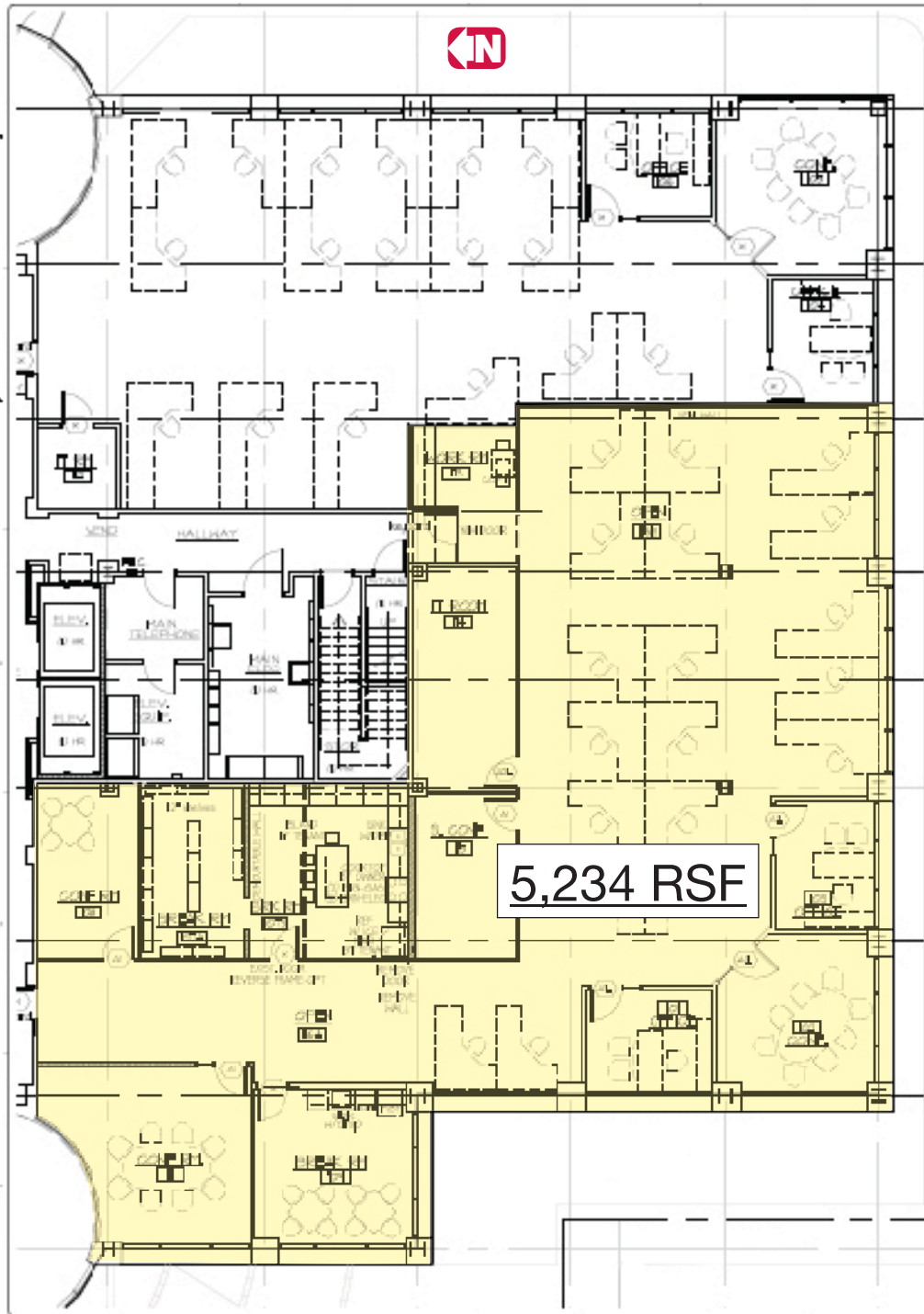
10235 South Jordan Gateway, Ste. 100 | South Jordan, UT 84095

Office 801.727.4444 | Fax 801.727.4400

www.naiutah.com

MINUTEMAN PARK, BLDG III - SUBLEASE

13947 SOUTH MINUTEMAN DRIVE | DRAPER | UTAH



contact

Jack A. Woodward

direct 801.578.5565

jwoodward@naiutah.com

Jake J. Davis

direct 801.746.4722

jdavis@naiutah.com

Nick M. Teseros, MBA

direct 801.746.4749

nteseros@naiutah.com

This statement with the information it contains is given with the understanding that all negotiations relating to the purchase, renting or leasing of the property described above shall be conducted through this office. The above information while not guaranteed has been secured from sources we believe to be reliable.

NAIUtah

Commercial Real Estate Services, Worldwide.

Creating and preserving real estate values.™

10235 South Jordan Gateway, Ste. 100 | South Jordan, UT 84095

Office 801.727.4444 | Fax 801.727.4400

www.naiutah.com